

Opti Light



Reference:

OptiLight PLS Tunnel System

Document :

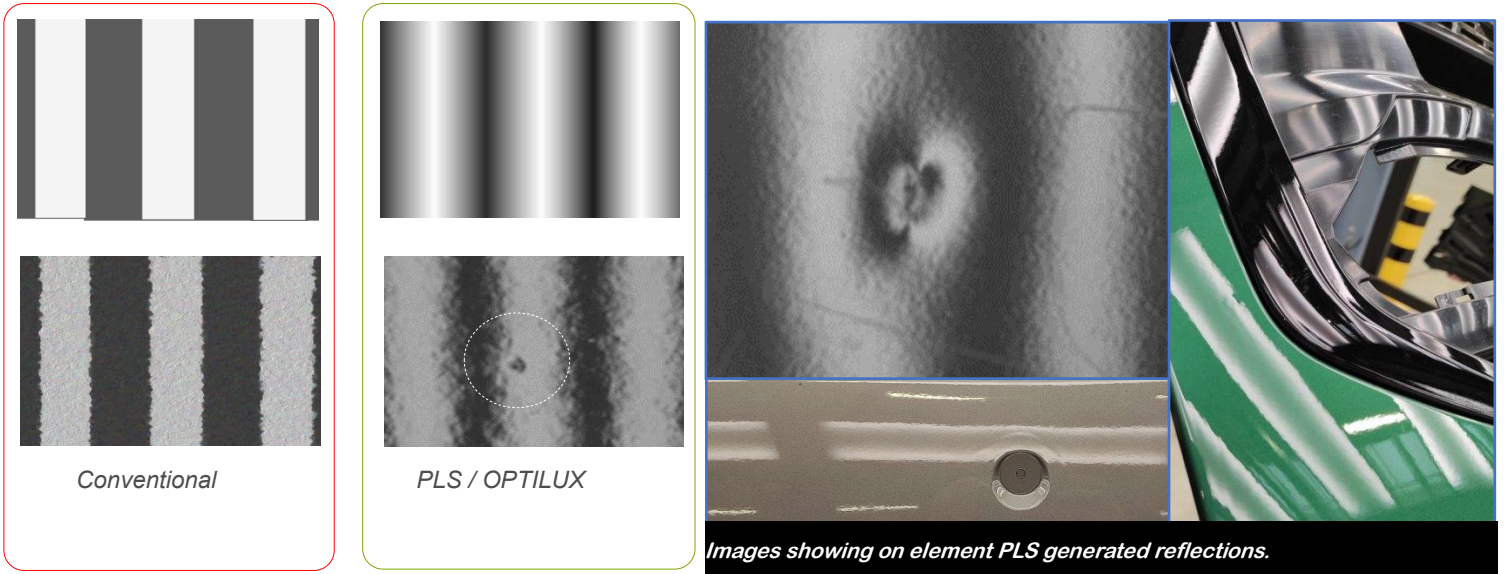
TECHNICAL SPECIFICATIONS

PLS lighting systems

The here described system is equipped with the VIRELUX proprietary PLS light box design. It features a dedicated, sinusoidal profile light emission, improving operator ergonomony and visual accuracy.

Explanation: small defects are more visible in grey level transition zones, than in stepped profile lighting, whilst additionally reducing the needed operator movements.

This generally translates to higher detection rates, and lower operator fatigue effects.



LBM Tunnel System overview

The PLS tunnel system is designed for the high end inspection of complete vehicles.

The system consists of 9 tunnel shaped PLS light boxes. The overall working area under the system has an approximative 5.500 x 7.600 mm. The equipement is mounted on a longitudinal base profile, bolted on adjustable footings, onto the concrete factory floor.

The adopted tunnel shape features non disruptive and fully continous reflection lines on the vehicle body.

The clearance to the both sides of the vehicle is adapted to leave enough space for more operators to move around, or even to enable them working directly on spot on the body work.

The clearance above the vehicle, approx 3m from the floor, is adapted to big sized vehicles or SUV's.



Technical Data:

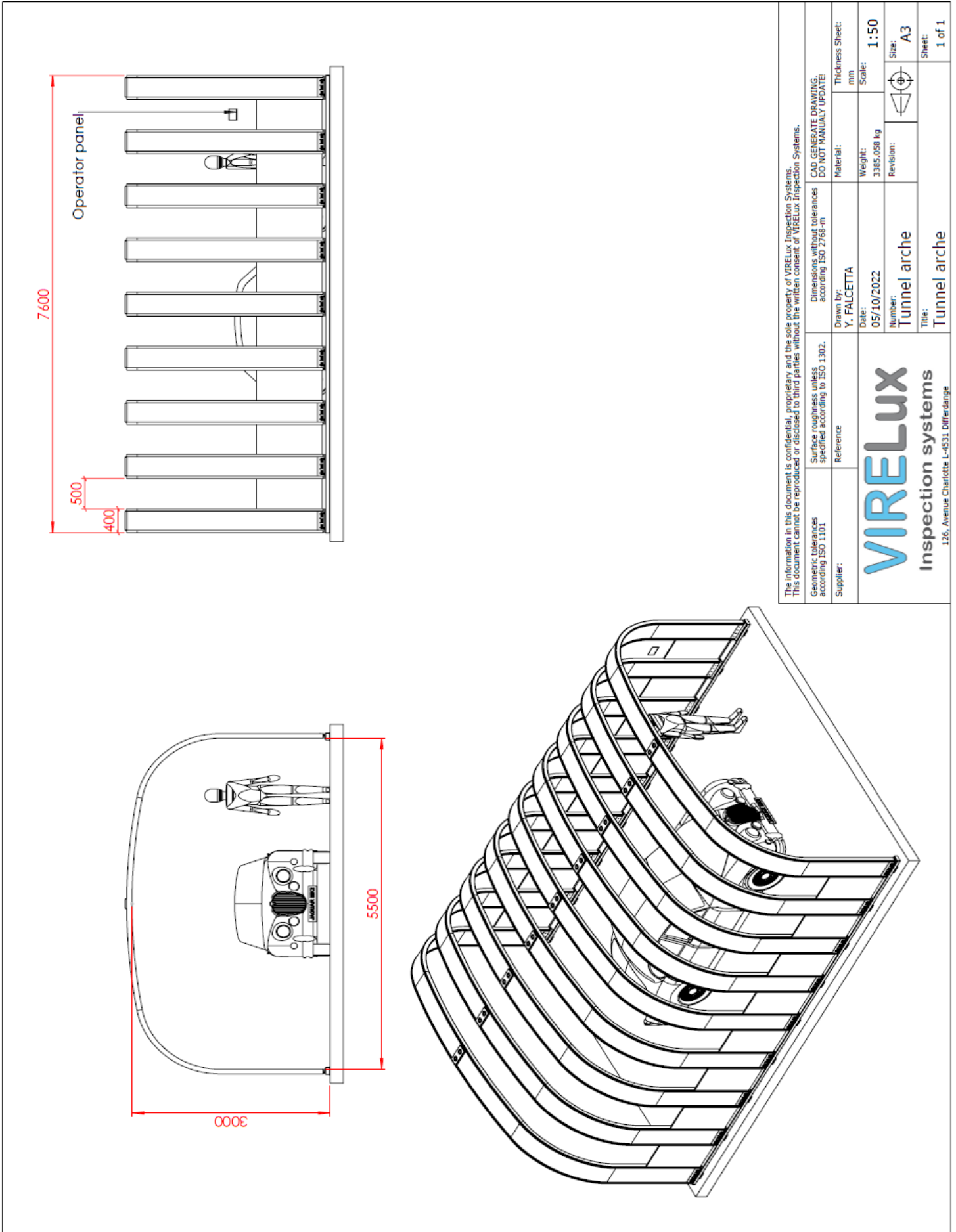
Sinusoïde light colour:	4.000 K
Double sinusoïde composite pattern:	4.000 K - 3.000 K – 4.000 K
LED Type:	SMD 2835
Led Lifetime:	>40.000 h
Luminosity:	Adjustable from 1.000-3.000 Lux at 1m
Dimmable:	PWM , stepless
Power supply:	400V – 16A
Top Flaps :	Motorized
Side Flaps :	Manual
Overall weight:	2.940kg
Overall dimensions (HxWxT):	7.600 x 5.500 x 3.000 mm
Rated power:	5.700 W

Optional Features:

Composite pattern

Composite pattern including an additional sinusoidal center line in yellow color.

Additional arch



The information in this document is confidential, proprietary and the sole property of VIRELUX Inspection Systems. This document cannot be reproduced or disclosed to third parties without the written consent of VIRELUX Inspection Systems.

Geometric tolerances according ISO 1101	Surface roughness unless specified according to ISO 1302	Dimensions without tolerances according ISO 2768-m	CAD GENERATE DRAWING; DO NOT MANUALLY UPDATE!	
Supplier:	Reference	Drawn by: Y. FALCETTA	Material:	Thickness Sheet:
		Date: 05/10/2022	Weight: 3385,058 kg	Scale: 1:50
		Number: Tunnel arche	Revision:	Size: A3
		Title: Tunnel arche		Sheet: 1 of 1

VIRELUX
Inspection systems
126, Avenue Charlotte L-4531 Differdange