

# Opti Light



**Reference:**

**OptiLight LBM Tunnel System**

Document :

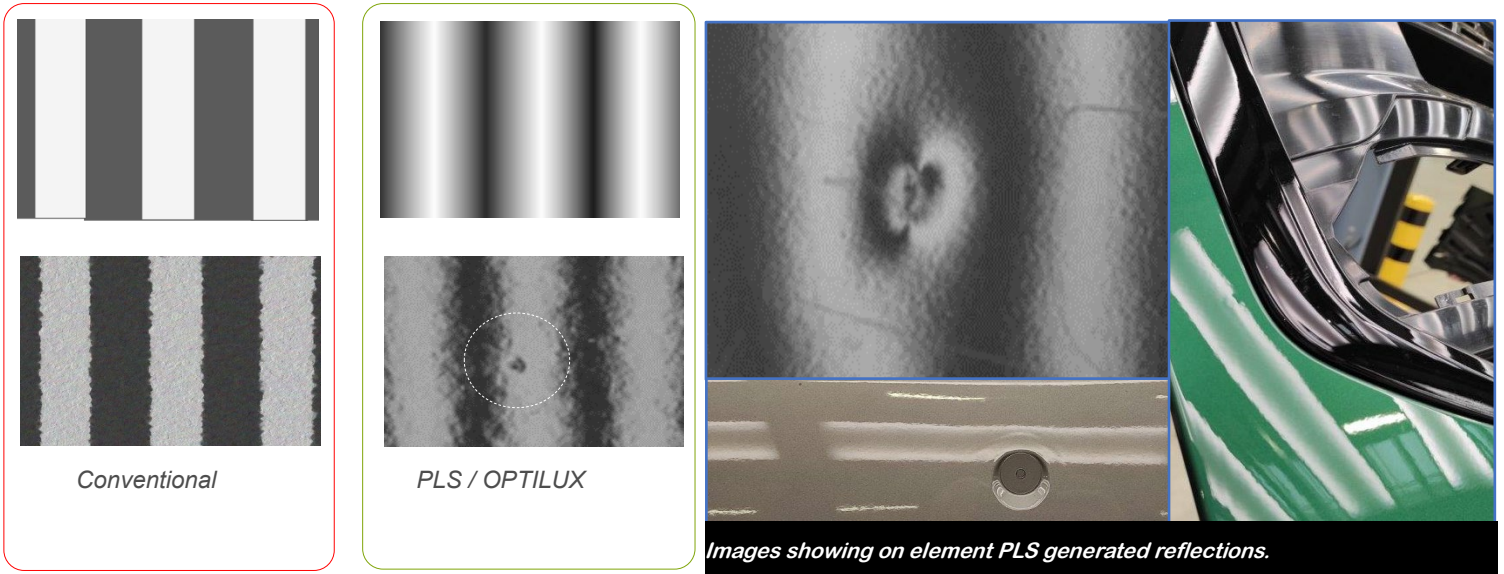
## TECHNICAL SPECIFICATIONS

### PLS lighting systems

The here described system is equipped with the VIRELUX proprietary PLS light box design. It features a dedicated, sinusoidal profile light emission, improving operator ergonomony and visual accuracy.

Explanation: small defects are more visible in grey level transition zones, than in stepped profile lighting, whilst additionally reducing the needed operator movements.

This generally translates to higher detection rates, and lower operator fatigue effects.



## LBM Tunnel System overview

The LBM tunnel system is designed for the inspection of complete vehicles.

The system consists of a supporting frame structure, equipped with 50 independent, flat PLS type LBM's. The overall working area under the system has an approximative 5.000 x 7.500 mm. The equipment is mounted on a longitudinal base profile, bolted on adjustable footings, onto the concrete shopfloor.

At both ends, front and rear, the roof panels are equipped with flaps, enabling angular adjustment of 3 LBM rows in accordance with the car length / geometry of the vehicle to be inspected.

The clearance to the both sides of the vehicle is adapted to leave enough space for more operators to move around, or even to enable them working directly on spot on the body work.

The clearance above the vehicle, approx 3m from the floor, is adapted to big sized vehicles or SUV'



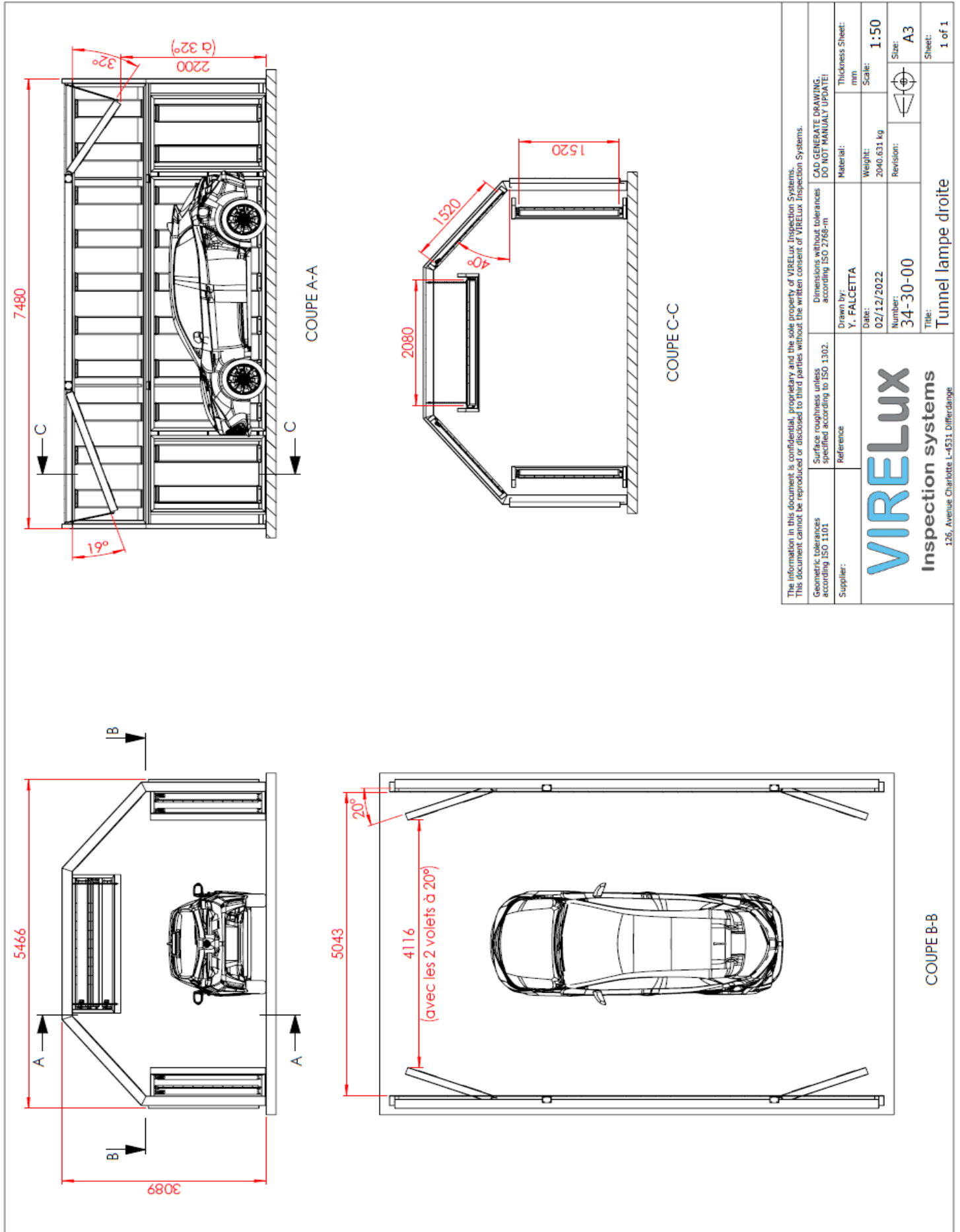
## Technical Data:

Sinusoïde light colour:	4.000 K
Double sinusoïde composite pattern:	4.000 K - 3.000 K – 4.000 K
LED Type:	SMD 2835
Led Lifetime:	>40.000 h
Luminosity:	Adjustable from 1.000-3.000 Lux at 1m
Dimmable:	PWM , stepless
Power supply:	400V – 16A
Top Flaps :	Motorized
Side Flaps :	Manual
LBM type :	LBM15
Number of LBM's :	50
Overall weight:	3.340kg
Overall dimensions (HxWxT):	7.480 x 5.466 x 3.089 mm
Rated power:	4.600 W

## Optional Features:

### Composite pattern

Composite pattern including an additional sinusoidal center line in yellow color.



The information in this document is confidential, proprietary and the sole property of VIRELux Inspection Systems. This document cannot be reproduced or disclosed to third parties without the written consent of VIRELux Inspection Systems.

Geometric tolerances according to ISO 1101	Surface roughness values specified according to ISO 1302.	Dimensions without tolerances according to ISO 2768-m	Material:	Thickness Sheet: mm
Supplier:	Reference:	Y. FALCETTA	Weight: 2040.631 kg	Scale: 1:50
			Date: 02/12/2022	Revision: A3
			Number: 34-30-00	Sheet: 1 of 1
			Title: Tunnel lampe droite	

**VIRELux**  
Inspection systems  
126, Avenue Charlotte L-4531 Differdange